



TLC 2D PROFILING SOFTWARE

Running on Pocket PC2003

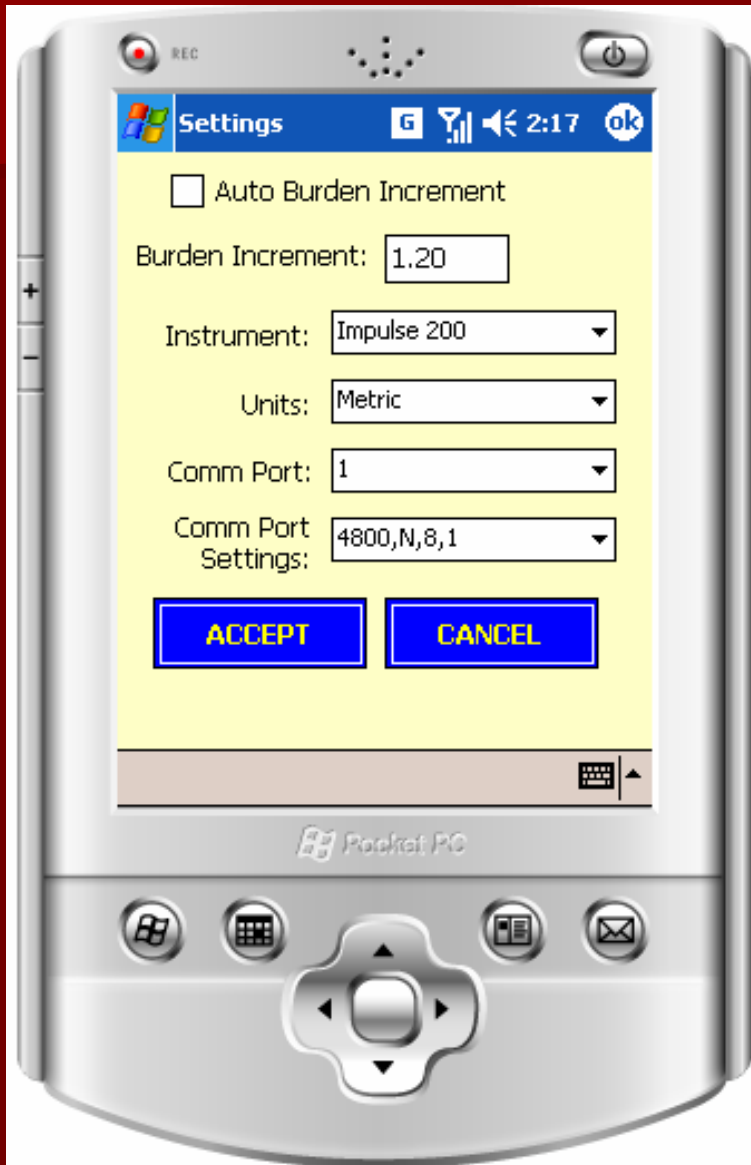
Windows Mobile 5

Windows CE Devices

TLC2D PROFILE APPLICATION – MAIN SCREEN

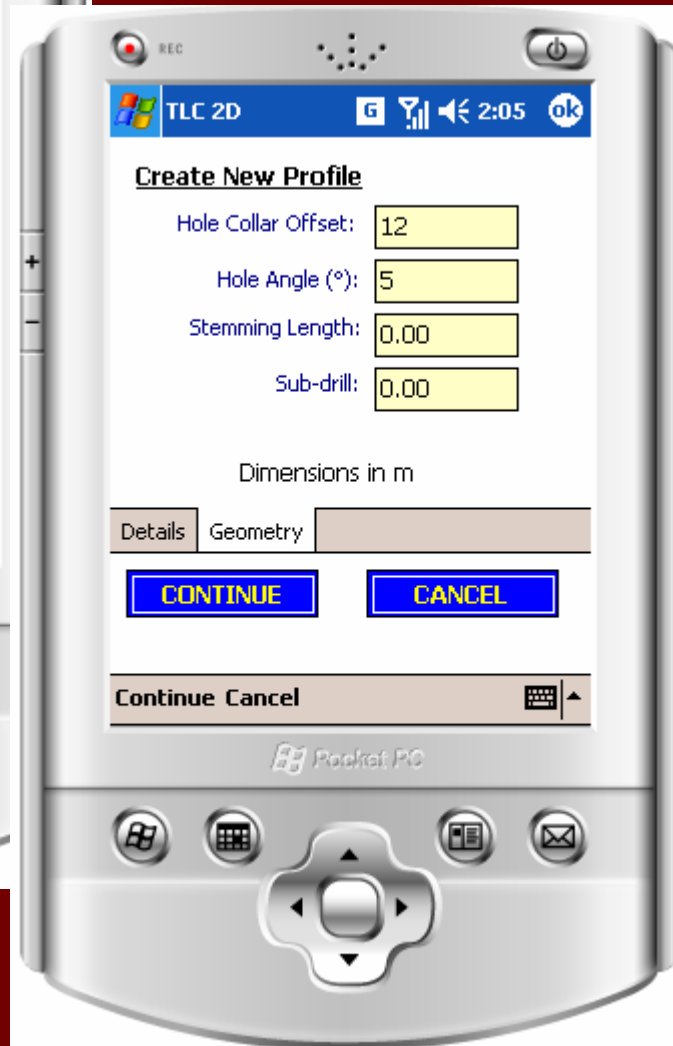
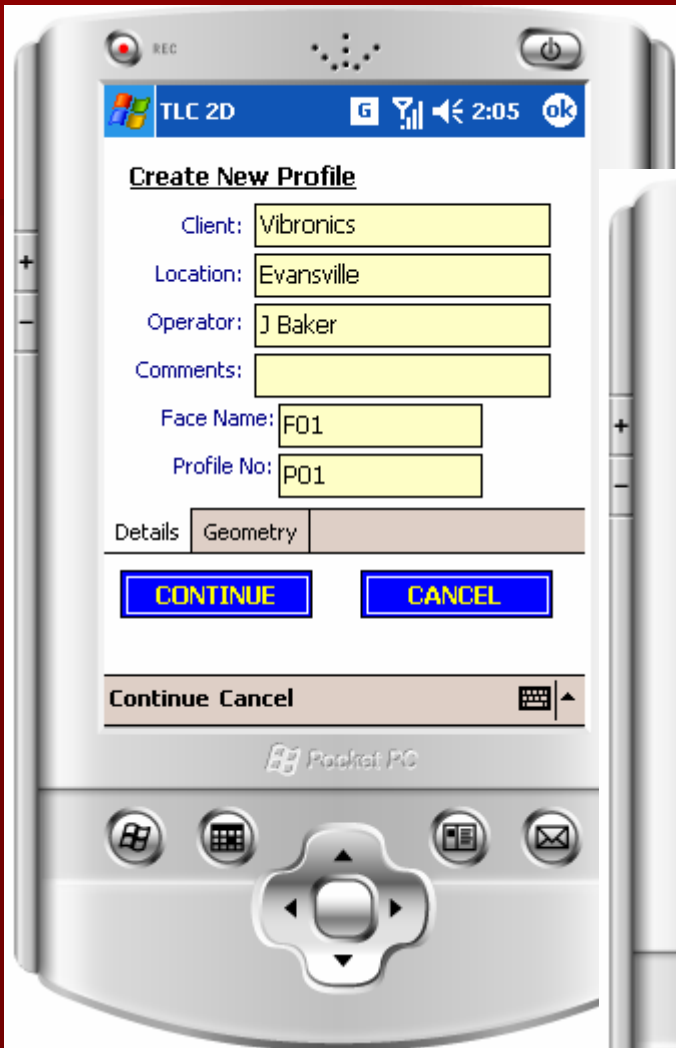


Settings...



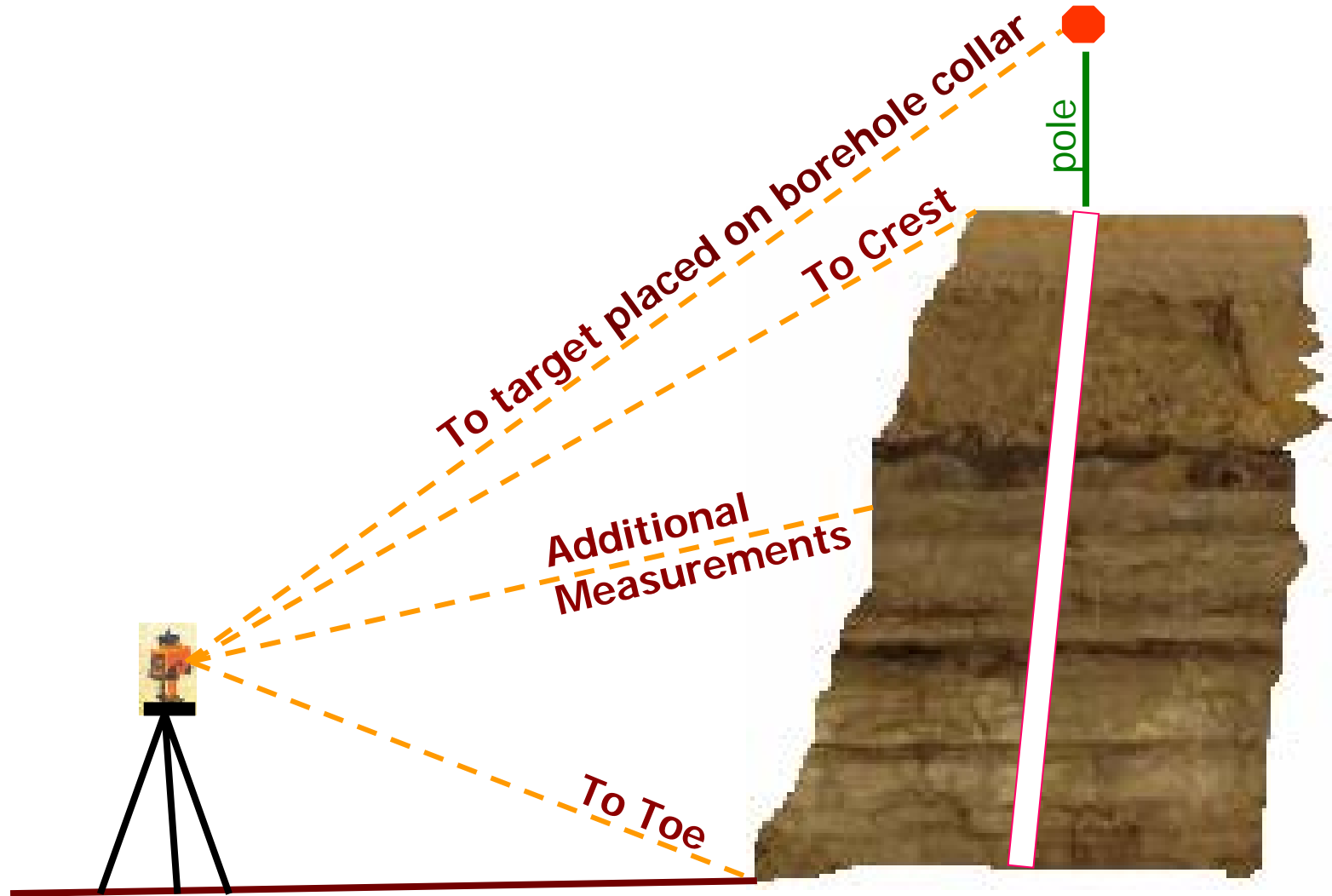
- Supports different lasers:
 - Impulse 200
 - Laser Atlanta
 - Burden Ace 300, Quarryman II
- Automatic conversion between metric and imperial units
- Burden calculation parameters
- Serial Communications parameters (including bluetooth serial ports)

Creating (Surveying) A New Profile

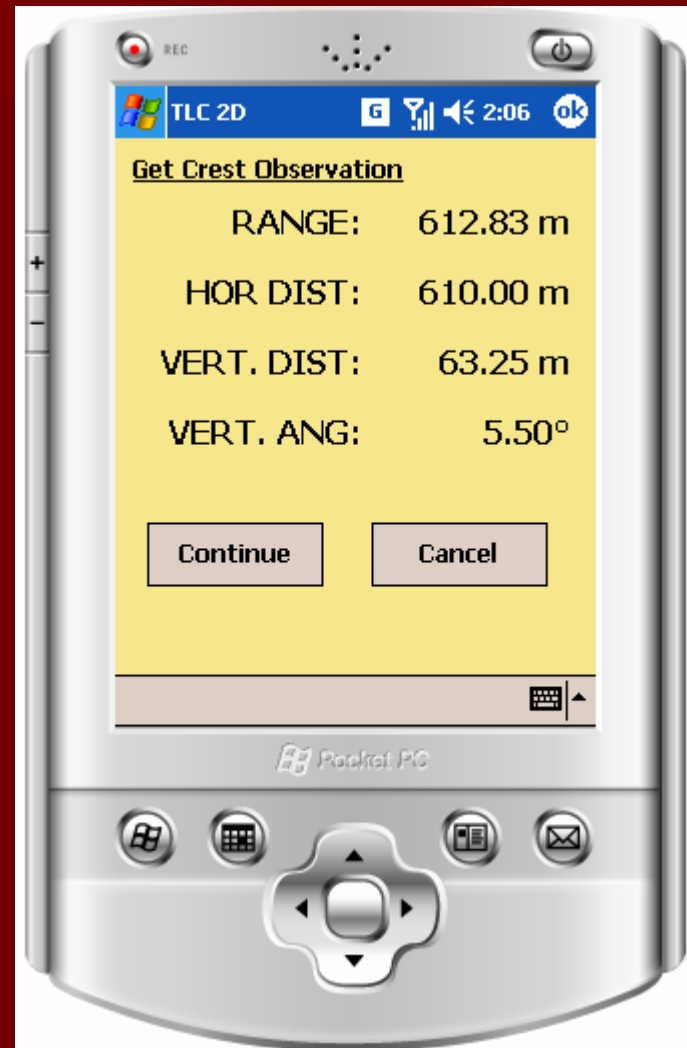


- Define client
- Define Face and Profile
- Borehole offset
- Borehole Angle
- Stemming
- Sub-Drill

Typical Measurements to be carried out:

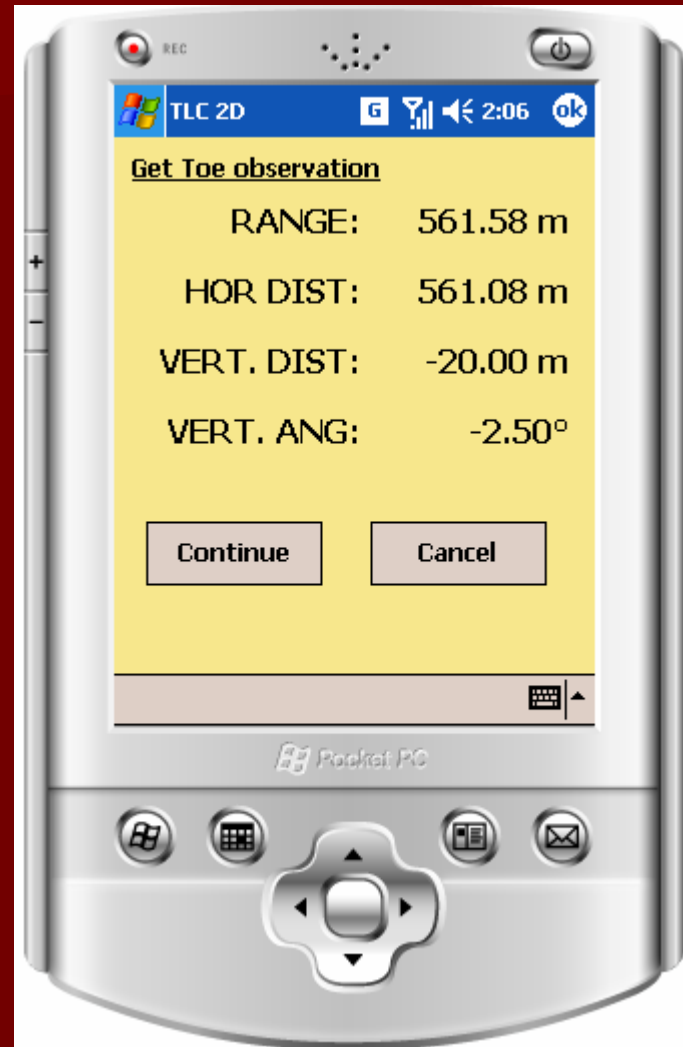


Shoot CREST Observation...



Repeat measurement until satisfied. Then press **CONTINUE**

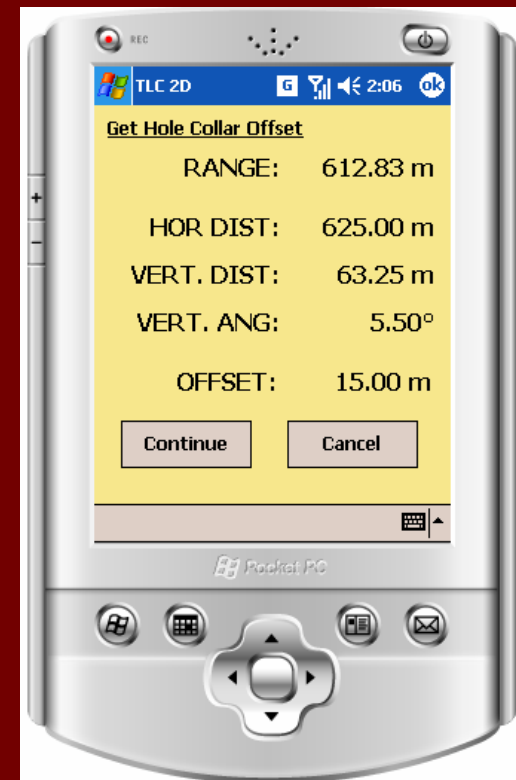
Shoot TOE Observation...



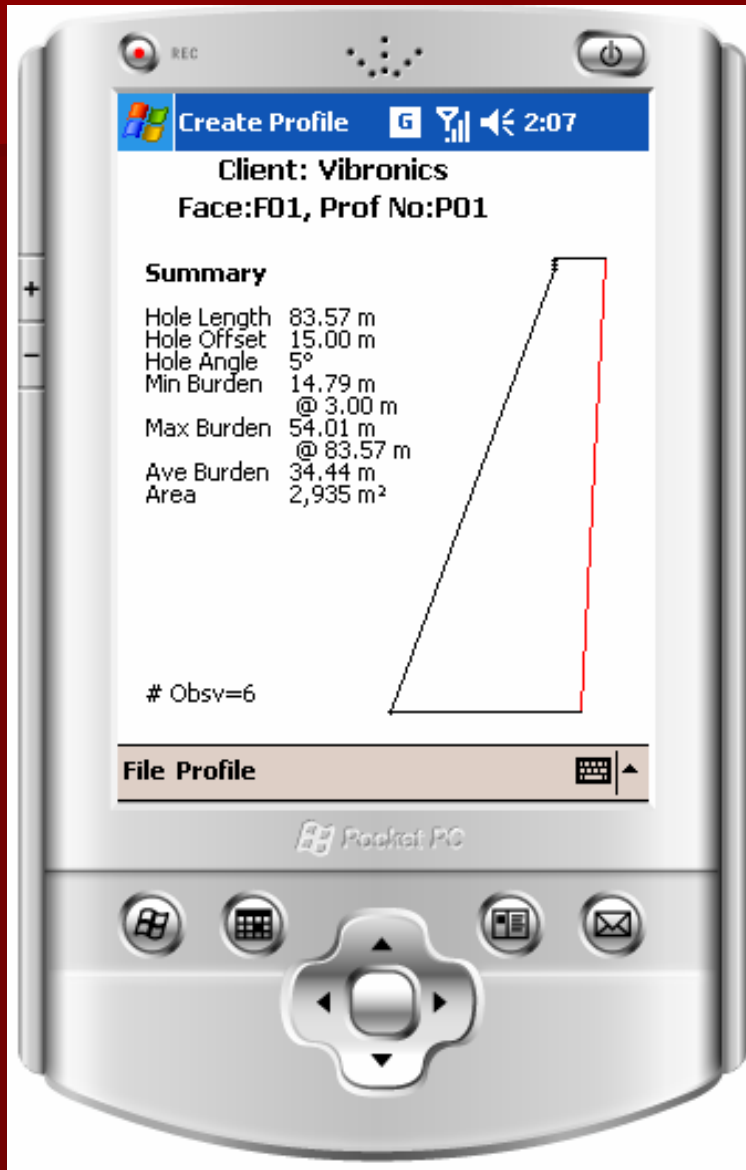
Repeat measurement until satisfied. Then press **CONTINUE**

Shoot Borehole Collar

- This option can be used to determine the position of the borehole on the profile, and thus determine the horizontal collar offset.
- If the user does not want to shoot the borehole collar, just press continue and the value that was entered initially will be used



Shoot Observations on FACE...



- Data points are automatically sorted according to elevation
- New toe and/or crest values automatically calculated
- Burden data calculated according to burden depth increment
- Profile area calculated

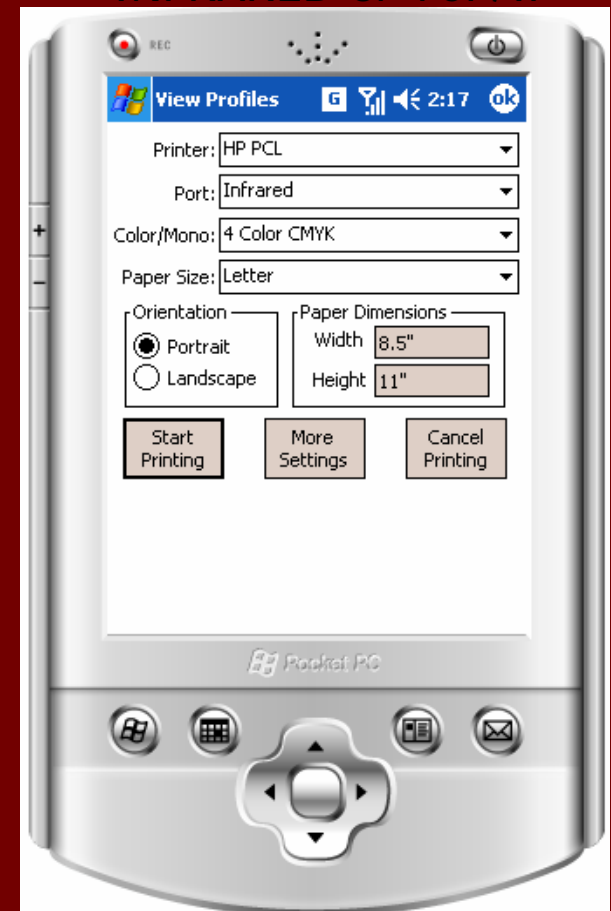
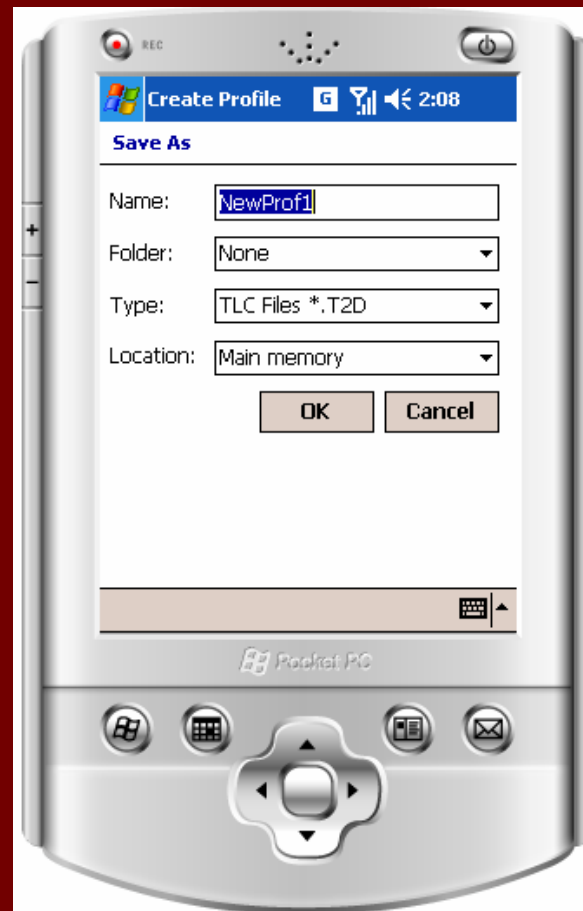
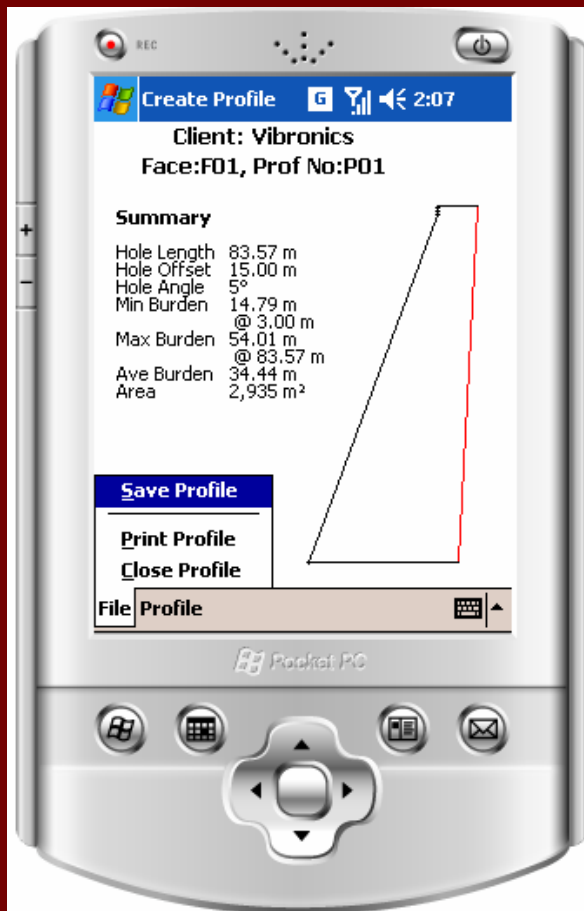
Options on CREATE function..

- SAVE PROFILE

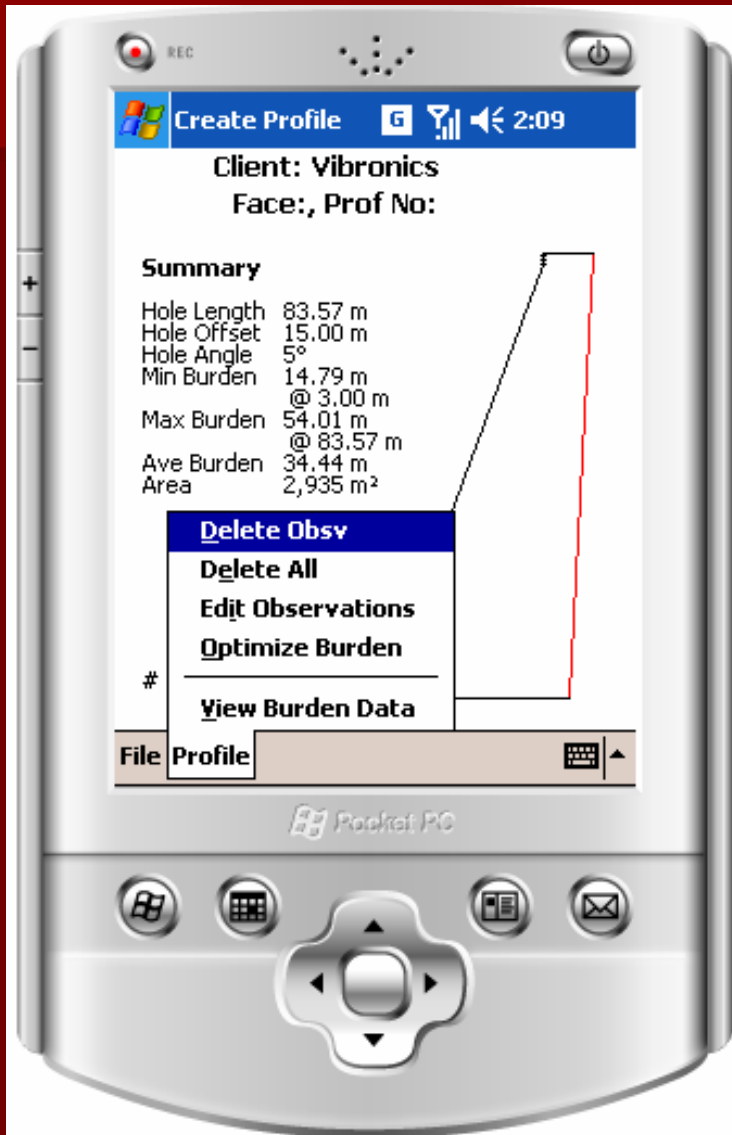
- PRINT PROFILE

- Stored as ASCII File with extension *.T2D

- Printer support via BLUETOOTH, INFRARED or TCP/IP



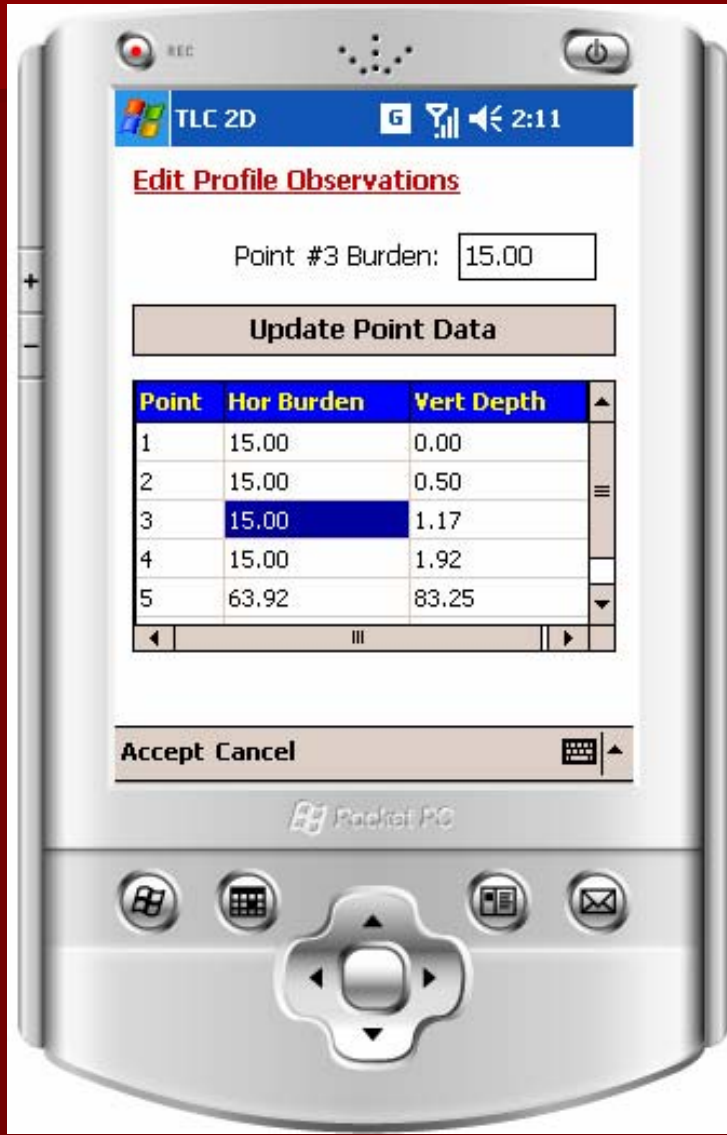
Options on CREATE function (cont...)



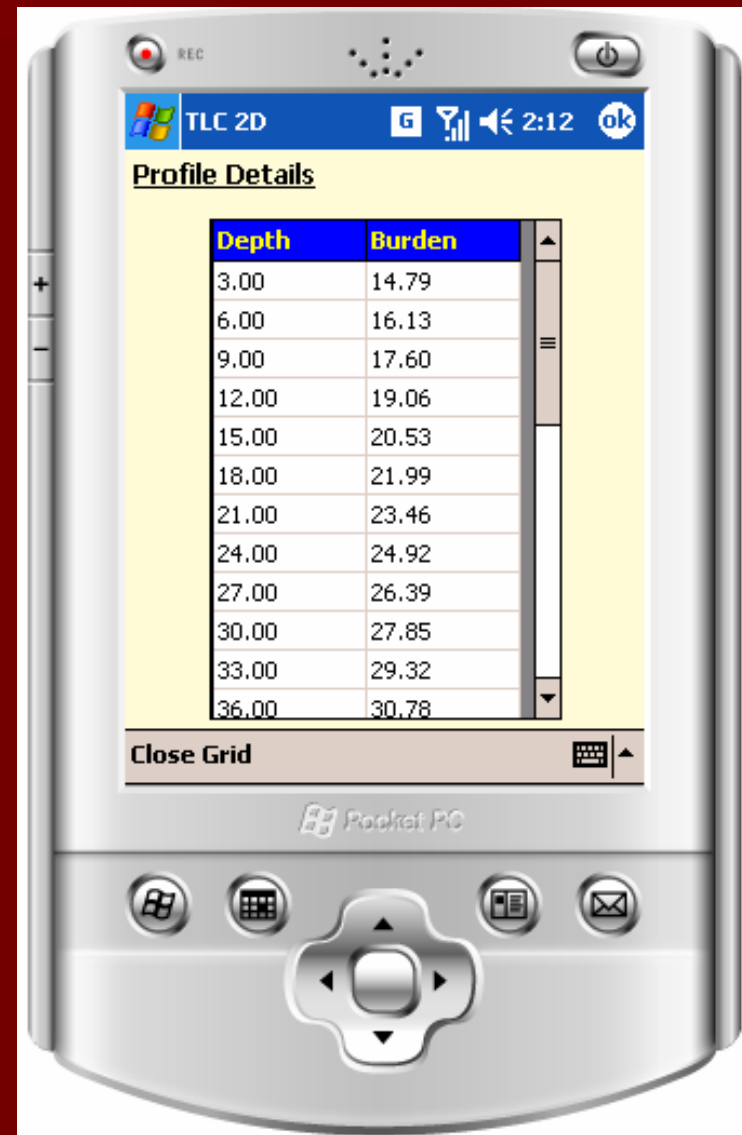
- Delete Observation(s)
- Edit observations
- Optimize burden
- View burden data at specified depths

Options on CREATE function (cont...)

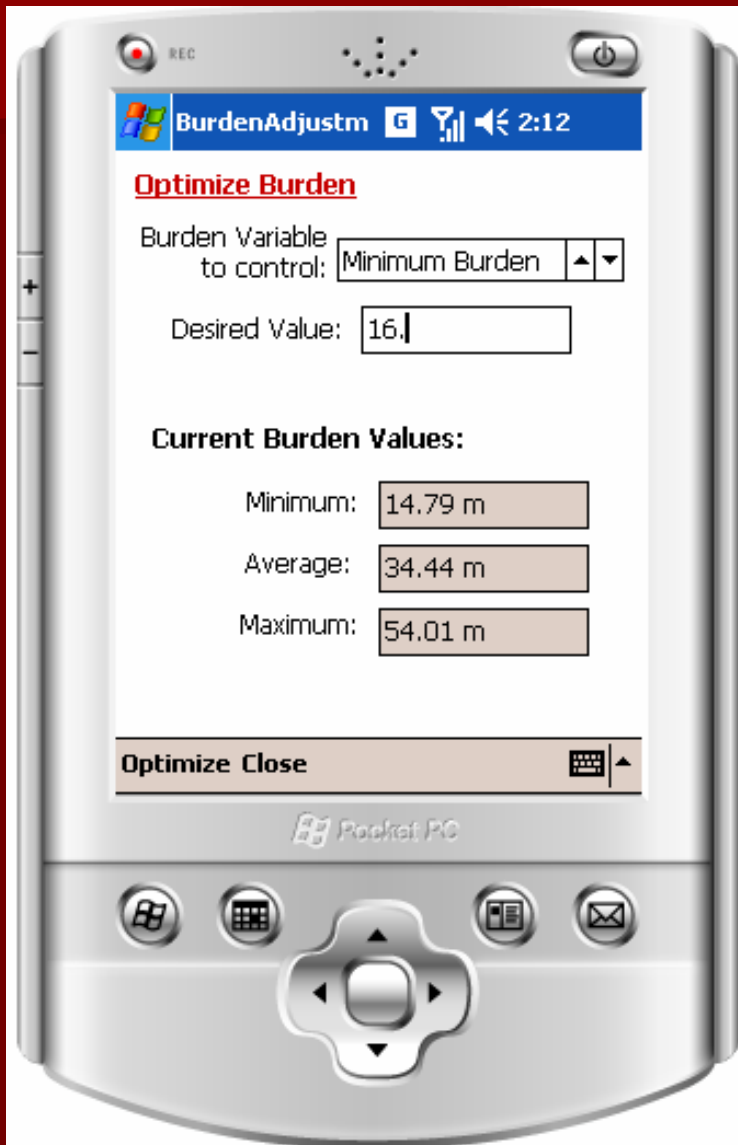
- Edit Observations



- View Burden Table



Optimize Profile



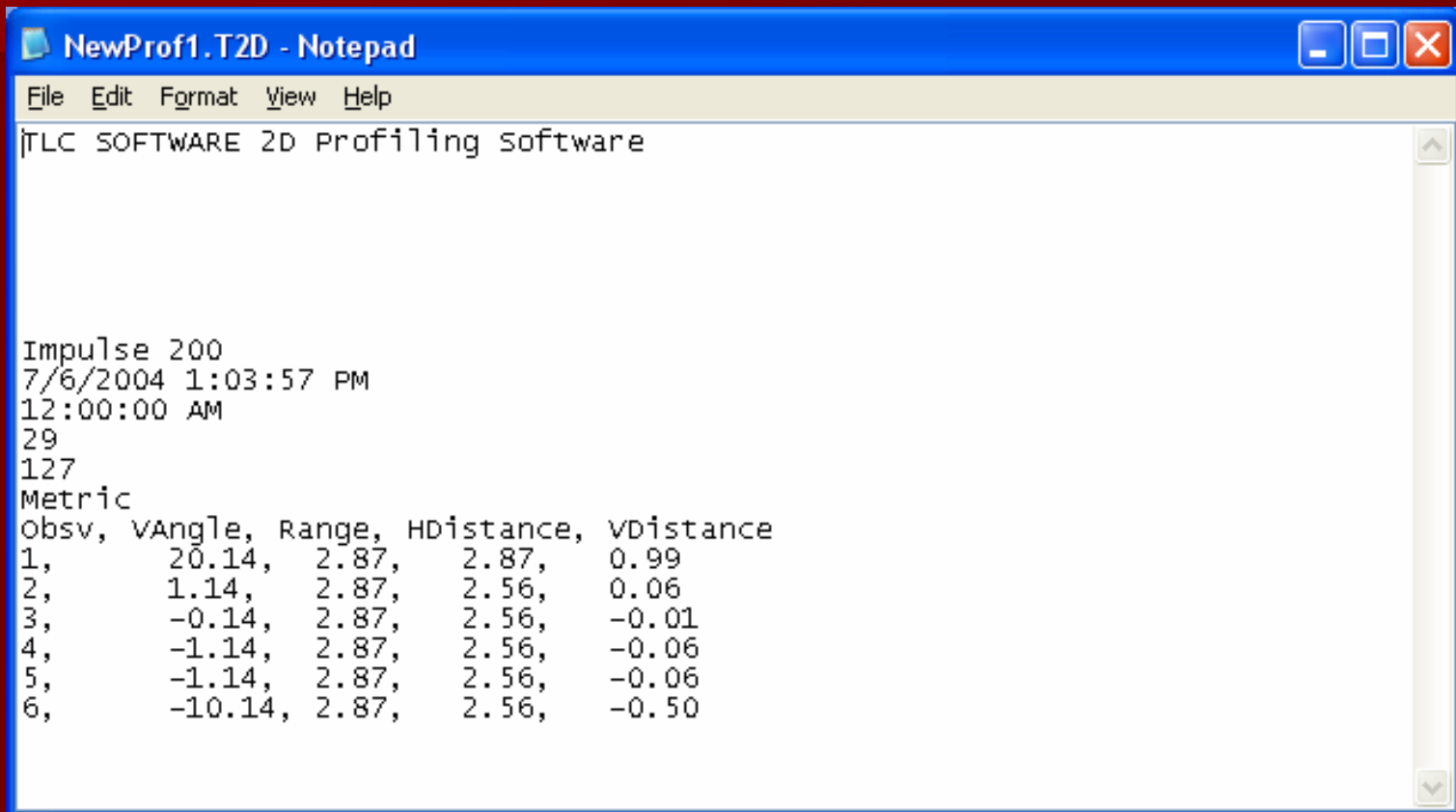
- Calculates position of borehole collar according required parameter:
- Minimum burden
- Average burden
- Maximum burden

Loading Stored Profiles...



- Profiles are stored with extension (*.T2D)
- File format is ASCII

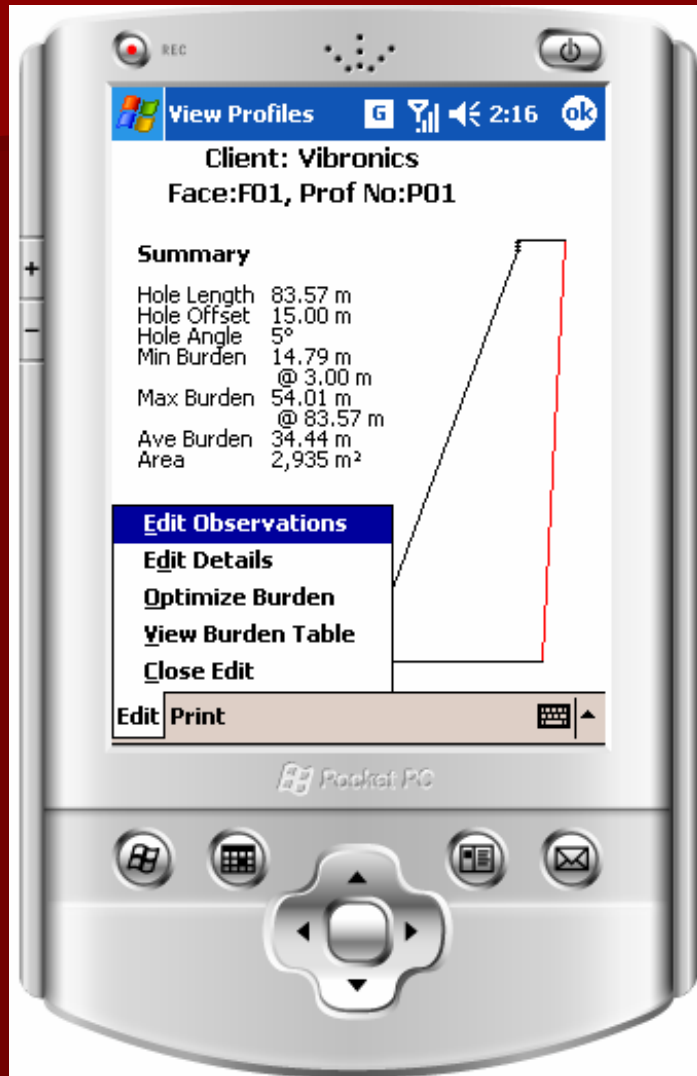
T2D File Format



```
ITLC SOFTWARE 2D Profiling software

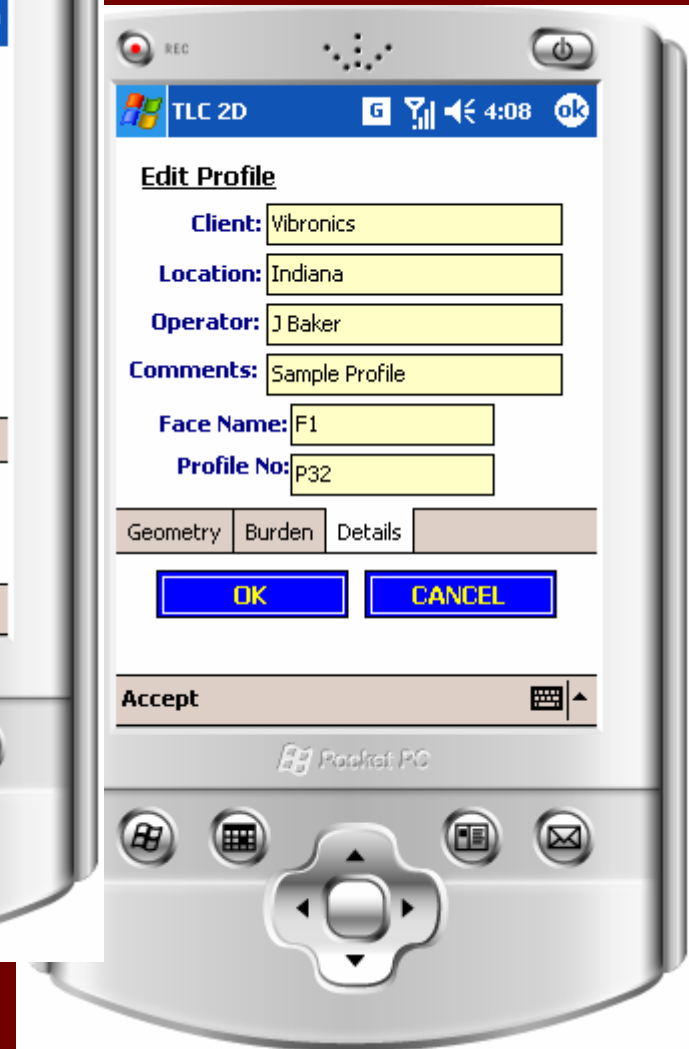
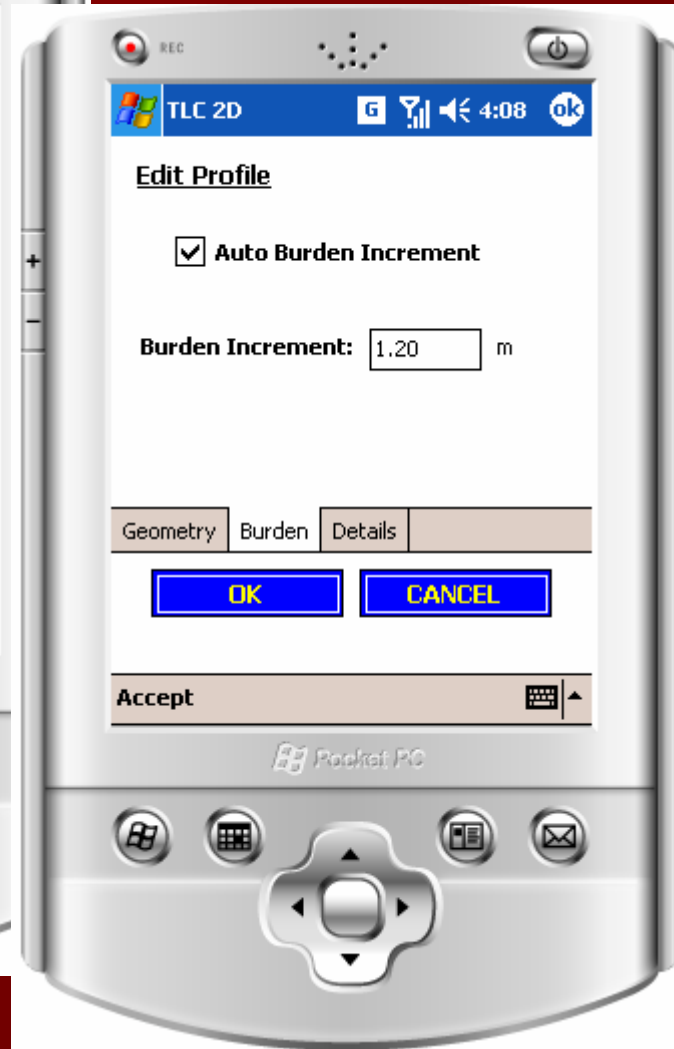
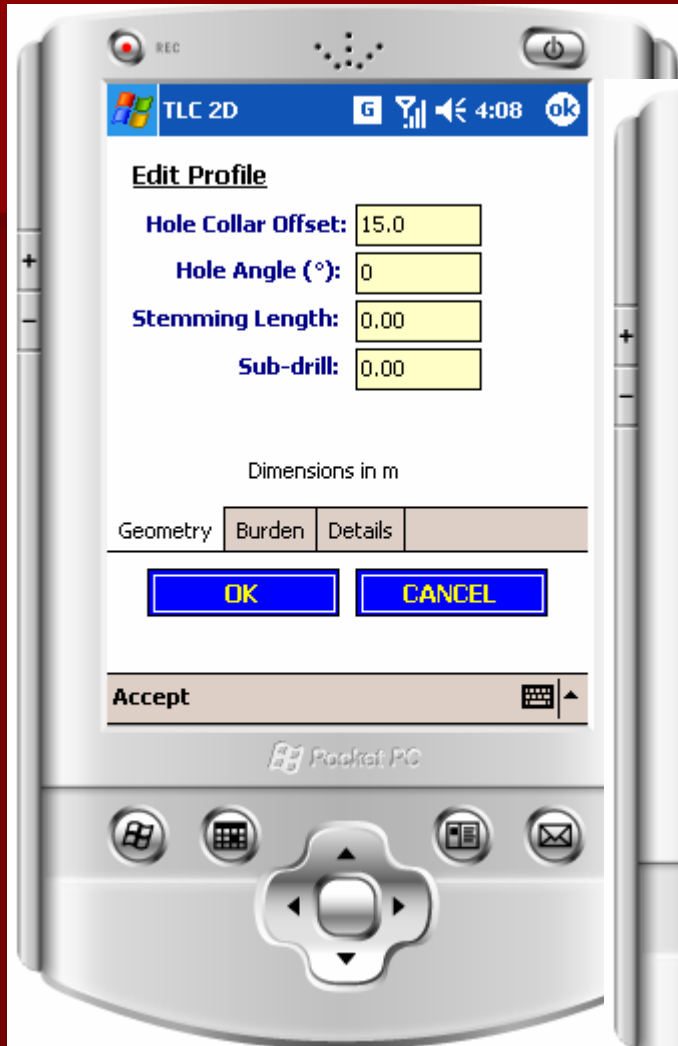
Impulse 200
7/6/2004 1:03:57 PM
12:00:00 AM
29
127
Metric
Obsv, vAngle, Range, HDistance, VDistance
1, 20.14, 2.87, 2.87, 0.99
2, 1.14, 2.87, 2.56, 0.06
3, -0.14, 2.87, 2.56, -0.01
4, -1.14, 2.87, 2.56, -0.06
5, -1.14, 2.87, 2.56, -0.06
6, -10.14, 2.87, 2.56, -0.50
```

Viewing Profiles...

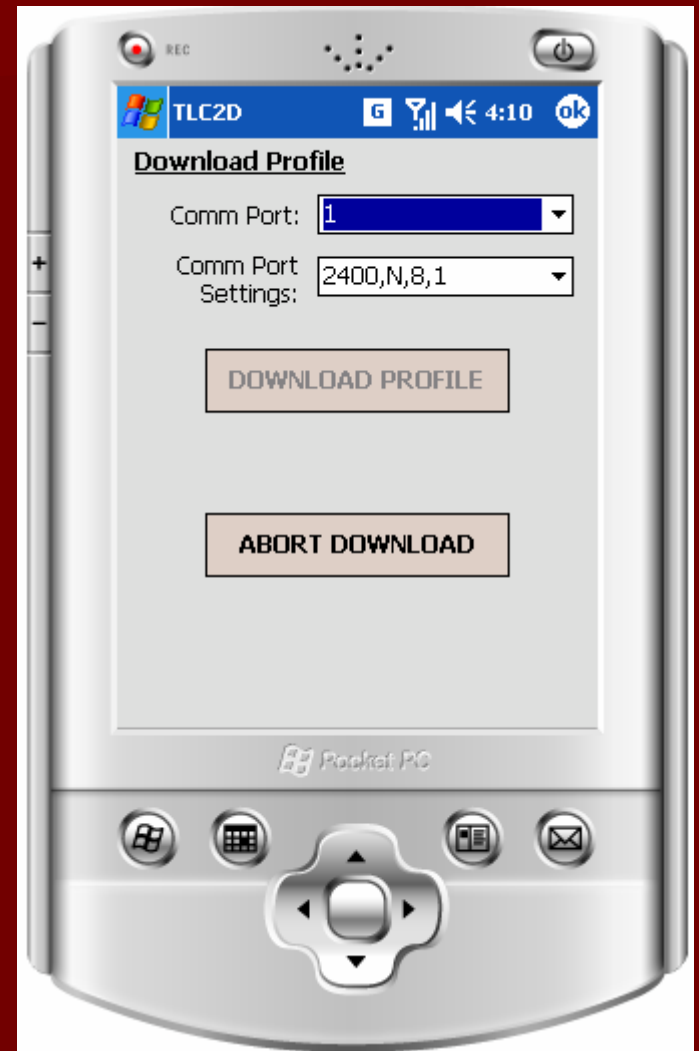
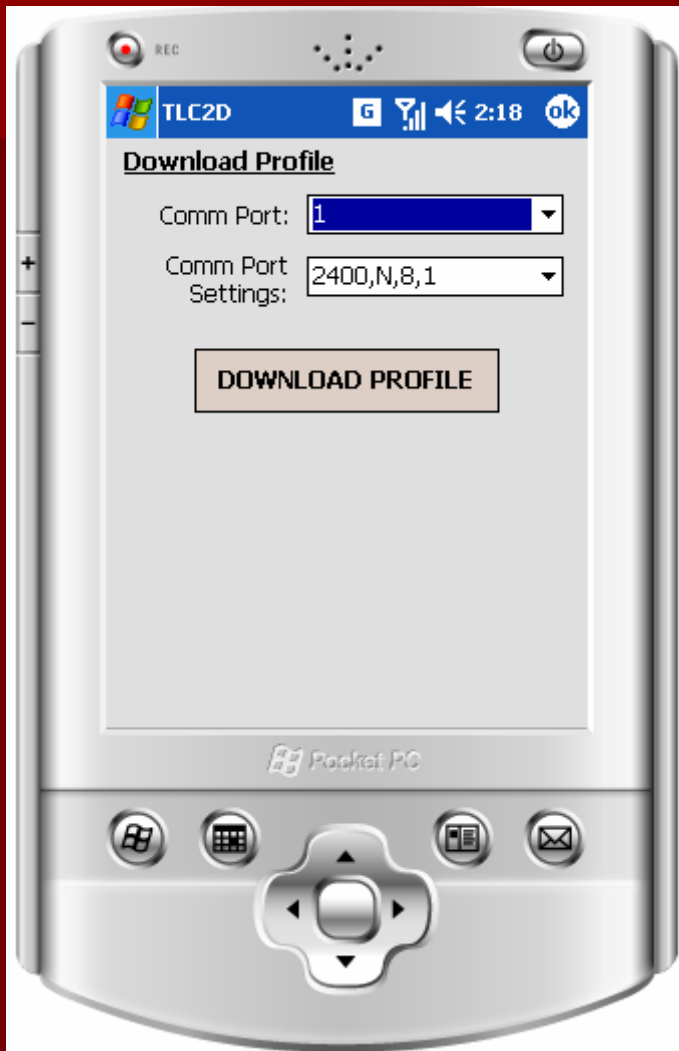


- Edit profile details
- All other features available during the creation process are available from the viewing option.

Editing Profile Properties...

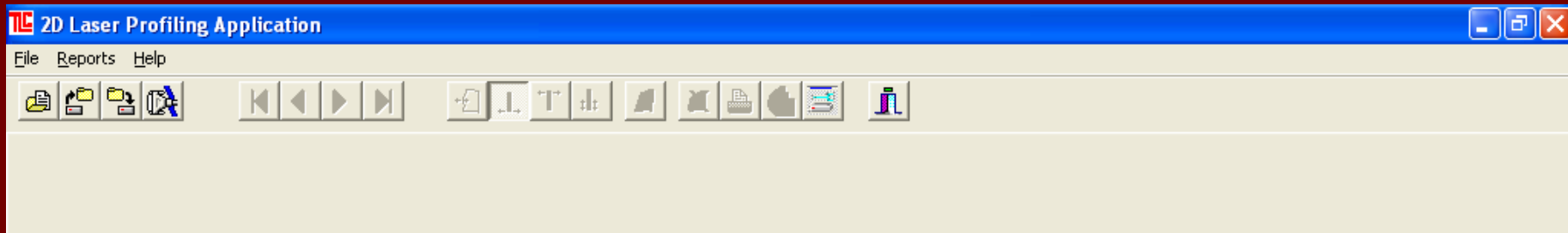


Downloading Profile to PC...



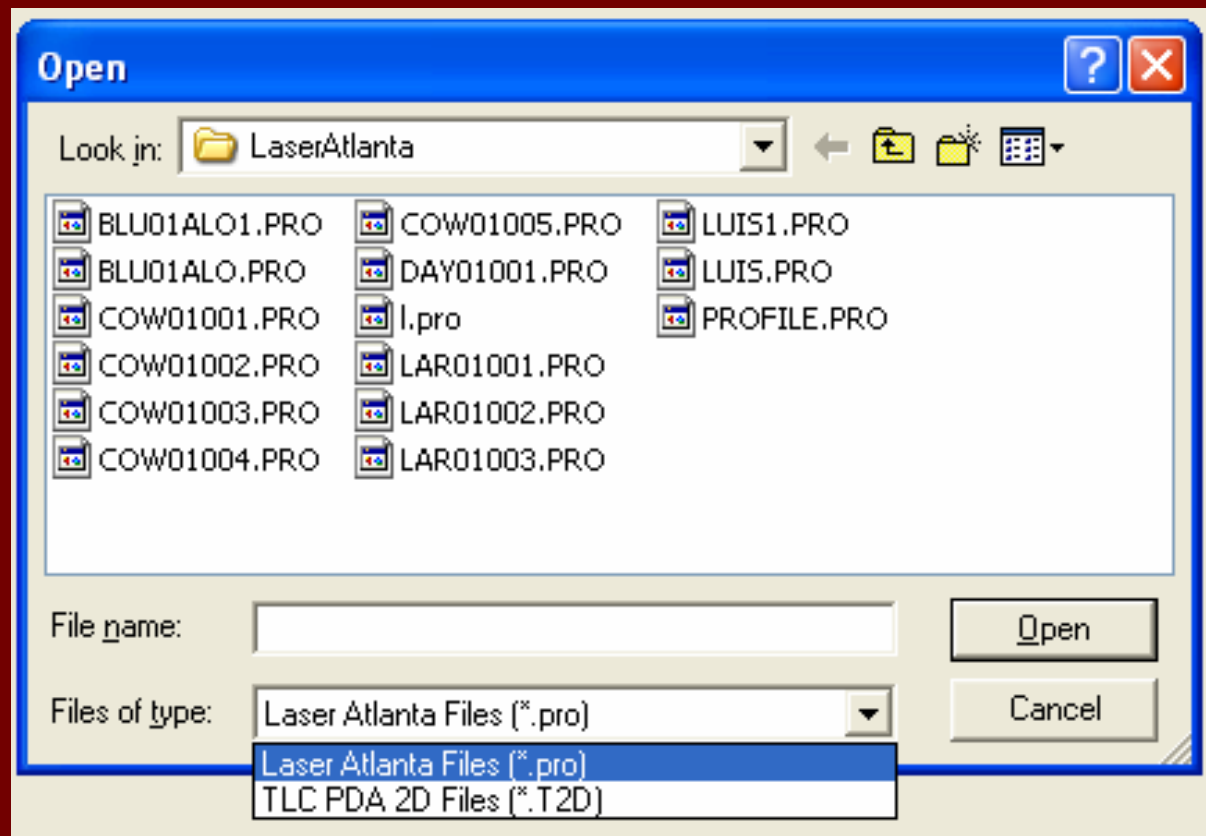
WINPROF 2D

- Windows based application
- Ability to interface to different lasers and data formats
- Collect profile data for editing, viewing and printing



WINPROF 2D

- Read files from Laser Atlanta, TLC PDA



WINPROF 2D – Profile Details

2D Laser Profiling Application

File Reports Help

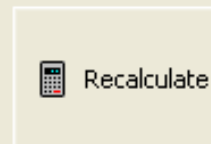


Data for Profile # 1

Profile Details | Profile Display

Customer	Evergreen Mining
Location	Cowen, WV
Date of Survey	03-21-1996 21:03
Operator	Jason Ryan
Comments	Shot to Upper Kattaning
Face Name	001
Profile Number	003
Instrument Type	Advantage

Borehole Collar Offset	12.0 ft
Borehole Angle (°)	28.50 °
Borehole Depth	89.4 ft
Floor Slope (°)	0.00 °
Profile Area	997.8 ft ²
Minimum Burden	4.1 ft
Maximum Burden	18.4 ft
Average Burden	11.2 ft



Raw Measurements Table:

Shot #	Vertical Angle (°)	Laser Range (ft)	Horizontal Distance (ft)	Vertical Distance (ft)
▶ 0	4.70	595.3	593.3	53.3
1	4.00	586.0	584.6	45.4
3	2.80	573.7	573.0	32.5
4	2.00	572.9	572.6	24.5
6	1.00	569.0	568.9	14.4
5	0.40	571.5	571.5	8.5
7	-1.50	566.8	566.7	-10.3
8	-1.70	563.3	563.1	-12.3
9	-2.10	561.1	560.7	-16.1
10	-3.10	551.5	550.7	-25.3

Profile Settings

Burden Increment: ft

Auto Select Burden Increment

Hole Diameter: in

Stemming: ft

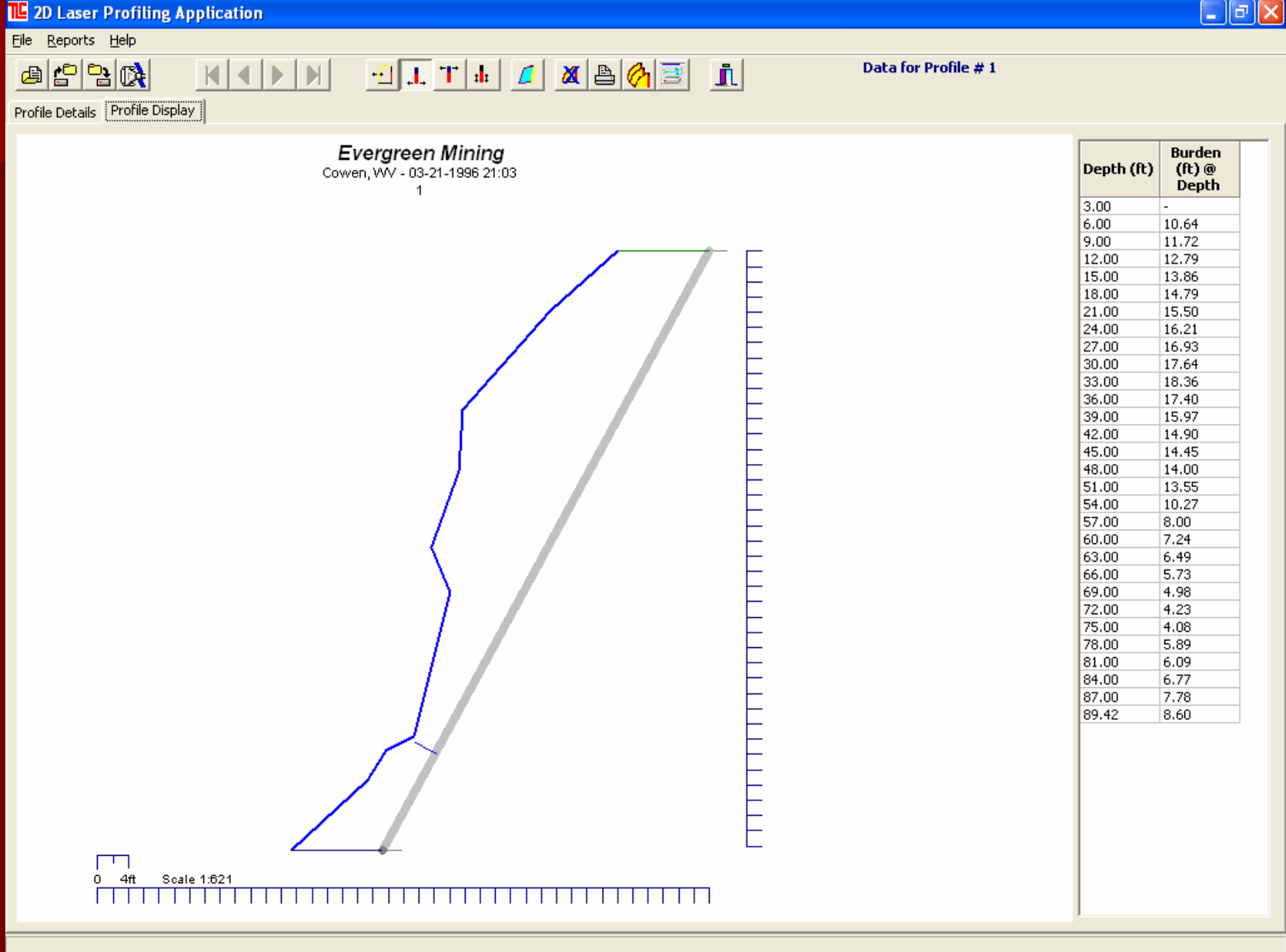
Back Fill: ft

Sub-Drill: ft

Survey Units

Metric Imperial

WINPROF 2D – Profile Display



WINPROF 2D – Profile Editing

- Profile data can be edited directly:

Customer	Evergreen Mining	Borehole Collar Offset	12.0 ft
Location	Cowen, WV	Borehole Angle (°)	28.50 °
Date of Survey	03-21-1996 21:03	Borehole Depth	89.4 ft
Operator	Jason Ryan	Floor Slope (°)	0.00 °
Comments	Shot to Upper Kattaning	Profile Area	997.8 ft ²
Face Name	001	Minimum Burden	4.1 ft
Profile Number	003	Maximum Burden	18.4 ft
Instrument Type	Advantage	Average Burden	11.2 ft

 Recalculate

- Graphic tools can be used to modify the borehole position and profile details



WINPROF 2D

MULTIPLE PROFILES

- Stores multiple profiles – facilitates grouping of information for a face



- Automatic printing of more than one profile

Contact Details:

- TLC Software (Johannesburg, South Africa)
 - Luis Valentim, Terry Cousins
 - sales@tlc.co.za or luis@tlc.co.za
 - www.tlc.co.za
 - Tel: +27 11 4633860
- Vibronics (Evansville, Indiana, USA)
 - John Wiegand, Jeff Baker, John Smith
 - sales@vibronics.com or jbaker@vibronics.com
 - www.vibronics.com
 - Tel: (812) 853 2300

