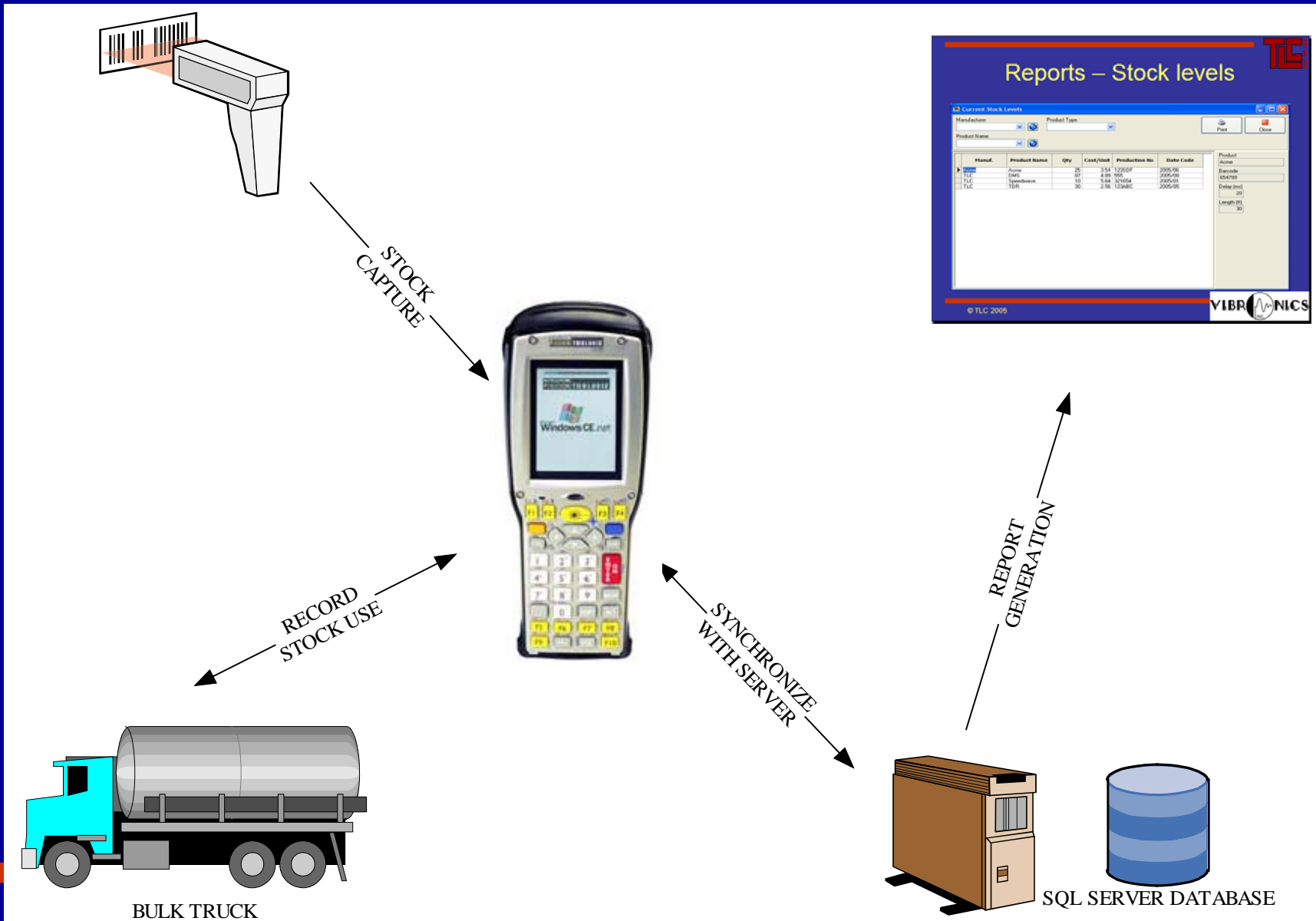


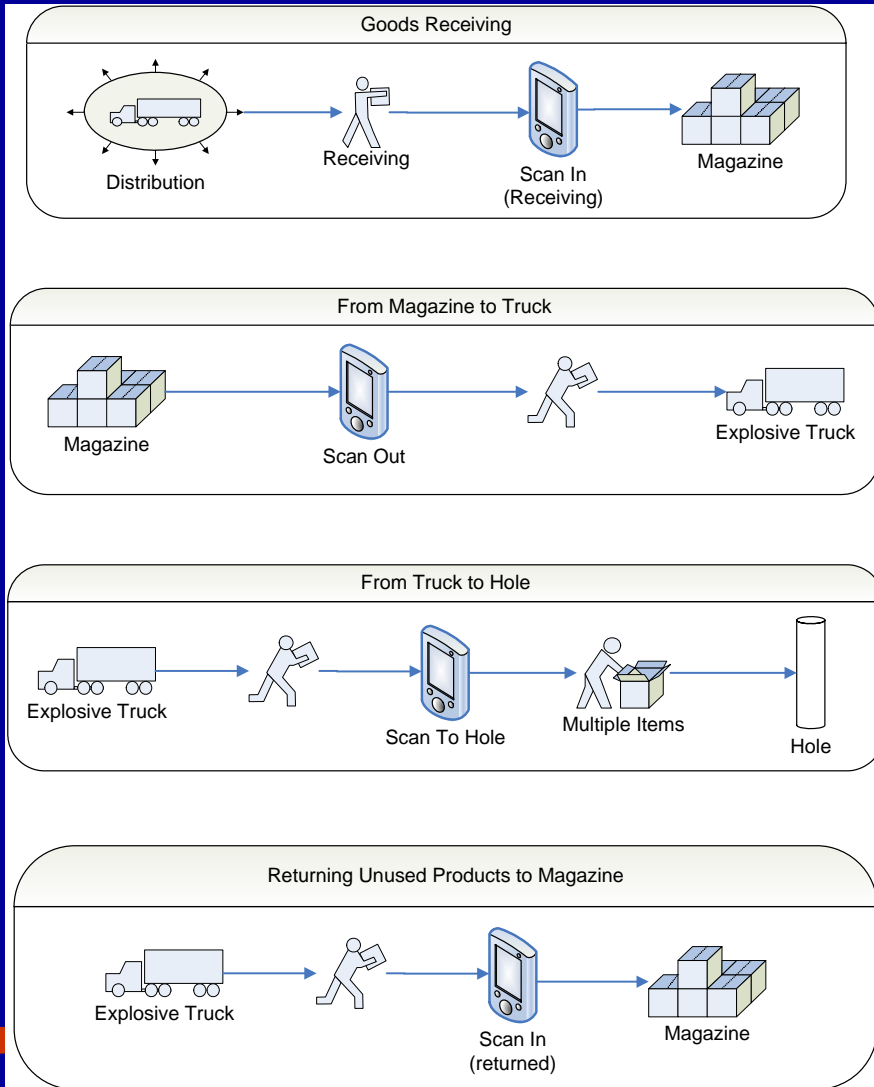
# Magazine Stock Control System



# System Overview - Graphical



# Mobile Device – Function Overview



# System Overview - Description

- Manufacturers and Products are defined on the PC.
- Mobile Device is docked, receiving all Manufacturer and Product definitions.
- Stock is captured on the Device by scanning or manual entry.
- Stock usage is recorded on the Device.
- The Device is again docked, updating the stock database.
- Print Stock Level, Shot, Shooter or Transactions report.
- One-click database backup or restore.

# Product Definition - Manufacturers

- Customisable list of Manufacturers, including contact details.
- Once-off definition.
- Mobile Device automatically updated on docking.

Manufacturers Database

Name  
Dyno

Address  
111 Main

Phone No  
555-1212

	Name	Address	Phone No
▶	Dyno	111 Main	555-1212

# Product Definition – Product Types and Categories

- Customisable list of Product Types.
- Once-off definition.
- Mobile Device automatically updated on docking.

**TLC Product Types Database**

Manufacturer:

Product Name:

Barcode:

Accessory Type:  Booster/Primer/Bulk  Detonator/Delay

Weight:

Length:

Delay:

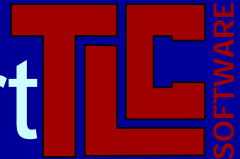
Manufacturer	Product Name	Barcode	Length	Delay	Weight	Accessory Type
Dyno	Anfo				100000	Primer
Dyno	C-90	PR11111			1	Primer
Dyno	Emulsion				100000	Primer
Dyno	EZTL 30 17	DY17830	30	17		Delay
Dyno	EZTL 30 25	DY25830	30	25		Delay
Dyno	EZTL 40 67	DY67840	40	67		Delay
Dyno	MS 40 14	DA14641	40	350		Delay
Dyno	MS 60 500	DA14660	60	500		Delay
Dyno	MS 80 500	DA14680	80	500		Delay

# Reporting - Stock Levels

- Printable Stock Level report.
- View
  - Levels by Serial Number
  - Group by Product Name
  - Filter by Manufacturer, Product Name or Product Type

Manufacturer	Product Name	Qty	Cost/Unit	Total Cost	Date Code	Serial No	Production No
Dyno	Anfo	85829	0.00	0.00	ANFO		ANFO
Dyno	C-90	25		0.00	25JA06J3	0010	100300000
Dyno	C-90	25		0.00	25JA06J3	0011	100300000
Dyno	C-90	21		0.00	25JA06J3	0012	100300000
Dyno	C-90	25		0.00	25JA06J3	0014	100300000
Dyno	Emulsion	96451	0.00	0.00	Emulsion		Emulsion
Dyno	EZTL 30 17	44		0.00	28ND05W1	0401	100197105
Dyno	EZTL 30 17	60		0.00	28ND05W1	0400	100197105
Dyno	EZTL 30 17	60		0.00	28ND05W1	0368	100196902
Dyno	EZTL 30 17	60		0.00	28ND05W1	0369	100196902
Dyno	EZTL 30 25	60		0.00	05DE05W1	0140	100197648
Dyno	EZTL 30 25	60		0.00	05DE05W1	0141	100197648
Dyno	EZTL 30 25	60		0.00	05DE05W1	0144	100197648
Dyno	EZTL 30 25	60		0.00	05DE05W1	0145	100197648
Dyno	EZTL 30 25	60		0.00	05DE05W1	0152	100197648
Dyno	EZTL 30 25	60		0.00	05DE05W1	0153	100197648
Dyno	EZTL 30 25	60		0.00	05DE05W1	0102	100197561

# Reporting – Shooter's Report



**Print Preview**

SHOOTERS REPORT  
PIT #1 PIT

Mine: Cottage Grove    Pit: Pit #1    Shot: 003    Date: 2006/03/31 02:06:30 PM    Shift: Shift1  
Shooter: John Smith    Supervisor: Clint Reinhard

Hole-ID	Wet (Y/N)	Drilled Depth	Meas. Depth	Backfill	Ft. Powder	Ft. Stemming	Lbs. Explosives	% Blend	Downhole Delay	Primer Type	Operator
A1	No	60	60	1	45	14	1037	80	500	C-90	J. Smith
A2	No	60	60	1	45	14	1037	80	500	C-90	J. Smith
A4	No	60	60	1	45	14	1037	80	500	C-90	J. Smith
A5	No	60	60	1	45	14	1037	80	500	C-90	J. Smith

Select for the report ...

Operation: Cottage Grove

Pit: Pit #1

Shot: 003

Report:  Shooter     Shot

Print    Close





# Reporting – Shot Report

**Print Preview**

← → ↶ ↷ ⌂ 🖨️ 📄 🗑️ Close

---

**SHOT REPORT**  
Shot: 003

---

**EXPLOSIVES**

<u>Component</u>	<u>Mass (lbs)</u>	<u>Cost (\$)</u>
ANFO	3,319	663,709.38
Emulsion	830	207,409.18
<b>EXPLOSIVES TOTAL</b>		<b>\$ 871,118.56</b>

---

**ACCESSORIES**

<u>Accessory Type</u>	<u>Product Name</u>	<u>Quantity</u>	<u>Cost (\$)</u>
Delay	EZTL 30 17	4	46.00
Delay	MS 60 500	4	43.60
Primer	C-90	4	34.60
<b>ACCESSORIES TOTAL</b>			<b>\$ 124.20</b>

---

**SHOT TOTAL      \$ 871,242.76**

---

**Select for the report ...**

Operation  
Cottage Grove ▾

Pit  
Pit #1 ▾

Shot  
003 ▾

Report  
 Shooter     Shot

Page 1 of 1

# Reporting – Transaction Report

**EXPLOSIVE INVENTORY**

Manufacturer: Dyno  
Item: C-90

Date	S/N	Employee	Out	In	Received	Recon	Balance
2006/03/28 11:27 AM	0010	clint			25		25
2006/03/28 11:28 AM	0011	clint			25		25
2006/03/28 11:29 AM	0012	clint			25		25
2006/03/28 11:29 AM	0014	clint			25		25
2006/03/30 04:39 PM	0010	john	25				0

**Select the reporting time period ...**

Manufacturer:  Product Name:

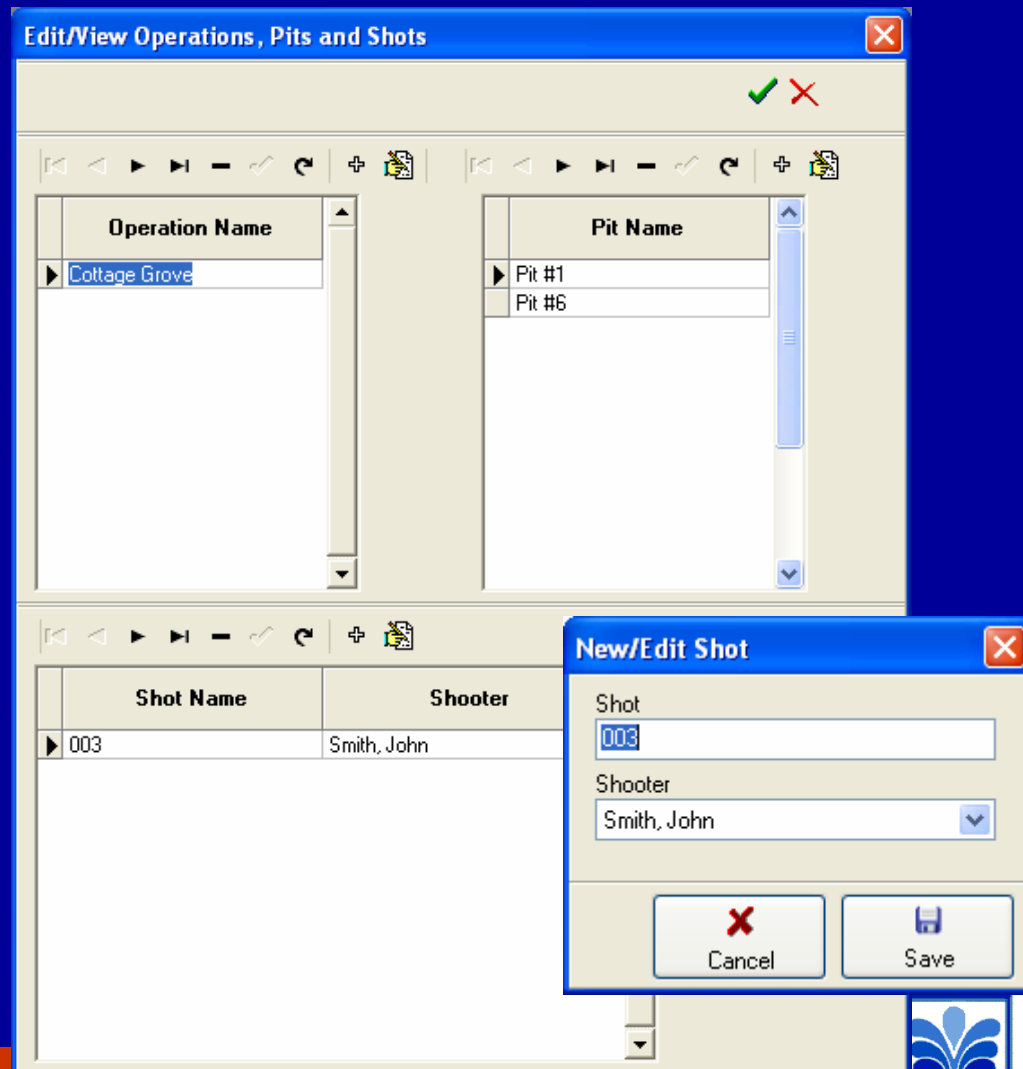
Start Date:  End Date:

Sun	Mon	Tue	Wed	Thu	Fri	Sat	Sun	Mon	Tue	Wed	Thu	Fri	Sat
26	27	28	1	2	3	4	26	27	28	29	30	31	1
5	6	7	8	9	10	11	2	3	4	5	6	7	8
12	13	14	15	16	17	18	9	10	11	12	13	14	15
19	20	21	22	23	24	25	16	17	18	19	20	21	22
26	27	28	29	30	31	1	23	24	25	26	27	28	29
2	3	4	5	6	7	8	30	1	2	3	4	5	6

Today: 2006/04/05  Today: 2006/04/05

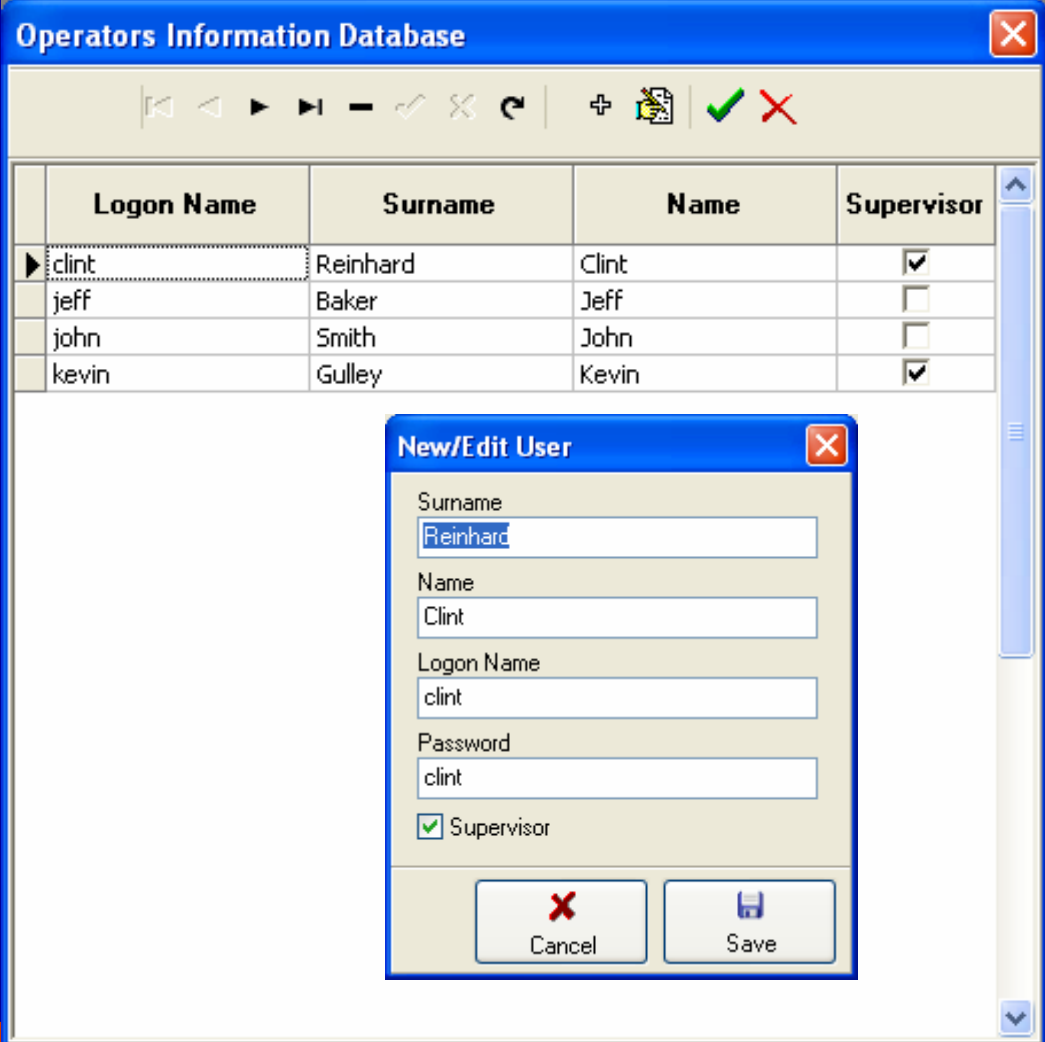
# System Management – Operations, Pits and Shots

- Pre-define Operations, Pits and Shots.
- Mobile Device automatically updated on docking.



# System Management – Users

- Simple interface for registering Users.
- Control user access by passwords and access level.
- Regulates access on Mobile Device.
- Mobile Device automatically updated on docking.



The screenshot displays the 'Operators Information Database' application window. It features a table with columns for Logon Name, Surname, Name, and Supervisor. A 'New/Edit User' dialog box is open, showing fields for Surname (Reinhard), Name (Clint), Logon Name (clint), Password (clint), and a checked 'Supervisor' checkbox. The dialog has 'Cancel' and 'Save' buttons.

Logon Name	Surname	Name	Supervisor
clint	Reinhard	Clint	<input checked="" type="checkbox"/>
jeff	Baker	Jeff	<input type="checkbox"/>
john	Smith	John	<input type="checkbox"/>
kevin	Gulley	Kevin	<input checked="" type="checkbox"/>

**New/Edit User**

Surname: Reinhard

Name: Clint

Logon Name: clint

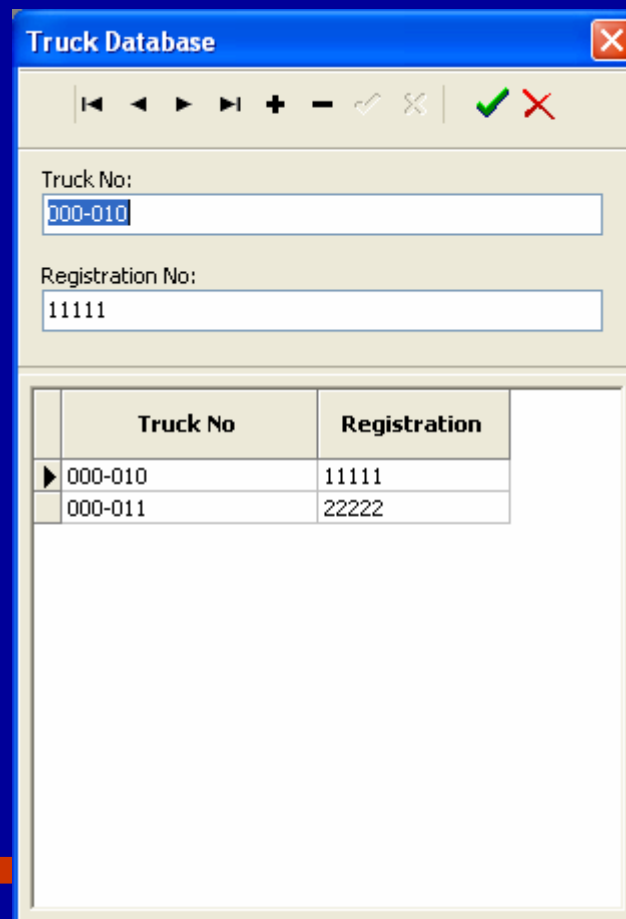
Password: clint

Supervisor

Buttons: Cancel, Save

# System Management – Trucks

- Simple interface for registering trucks.
- Mobile Device automatically updated on docking.



The screenshot shows a software window titled "Truck Database". At the top, there is a toolbar with navigation and action icons: a double left arrow, a single left arrow, a single right arrow, a double right arrow, a plus sign, a minus sign, a checkmark, and an 'X'. Below the toolbar, there are two input fields. The first is labeled "Truck No:" and contains the text "000-010". The second is labeled "Registration No:" and contains the text "11111". Below the input fields is a table with two columns: "Truck No" and "Registration". The table contains two rows of data.

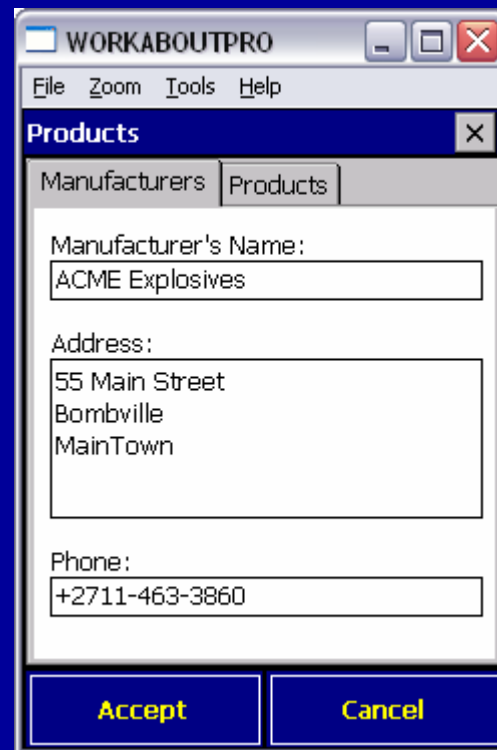
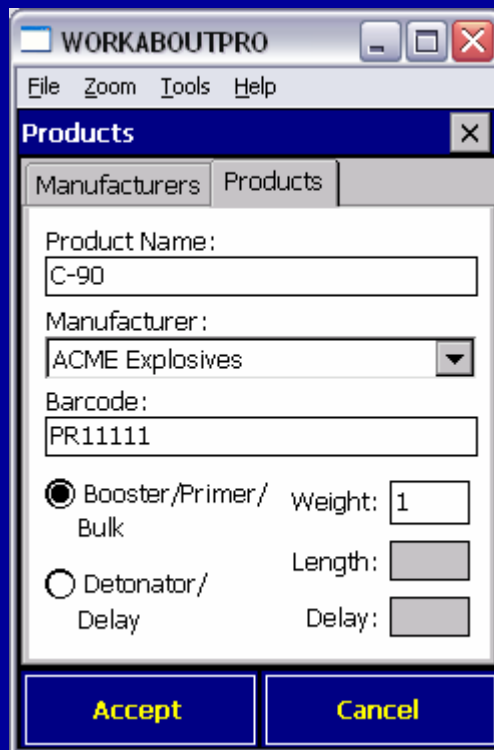
	Truck No	Registration
▶	000-010	11111
	000-011	22222

# System Specifications

- Designed to run on Windows XP or 2000.
- Uses MS SQL Server MSDE database (no additional licensing required).
- Mobile software runs on MS Windows Mobile or CE.

# PDA Screens







WORKABOUTPRO

File Zoom Tools Help

**Magazine**

Barcode:  ... **By Name**

Date Code:  ... S/N:  ...

Prod #:  Quantity:

Received New  
 In  
 Out

**Accept** **Cancel**

WORKABOUTPRO

File Zoom Tools Help

**Magazine**

Barcode:  ... **By Name**

Date Code:  S/N:

Prod #:

Received New  
 In  
 Out

**Accept** **Cancel**

**Search Data**

Product Name:

**OK**

WORKABOUTPRO

File Zoom Tools Help

**Magazine**

Barcode:  ... **By Name**

Date Code:  ... S/N:  ...

Prod #:  Quantity:

Received New  
 In  
 Out

**Accept** **Cancel**

Product: C-90



WORKABOUTPRO

File Zoom Tools Help

Field

Operation:  
Cottage Grove **Add**

Pit:  
Pit #1 **Add**

Shot:  
s1 **Add**

**Fill Holes**

**Fill Shot**

WORKABOUTPRO

File Zoom Tools Help

Fill hole Pit: Pit #1

Summary Details Accessories

Shot:  
s1

Truck:  
000-010

Shift:  
Shift1

Supervisor:  
clint

Operator:  
jeff

**Accept** **Cancel**

WORKABOUTPRO

File Zoom Tools Help

Fill hole Pit: Pit #1

Summary Details Accessories

Hole Code: A Hole #: 1 Hole Dia: 12

Drill Depth: 20 Measured Depth: 19.5

Back Fill: 2 Stemming Depth: 3

Use Decks  Wet

Dens: 1.03 % Anfo: 80.0 % Emul: 15.0 % Other: 5.0

**Accept** **Cancel**

WORKABOUTPRO

File Zoom Tools Help

Fill hole Pit: Pit #1

Summary Details Accessories

Primer Type:  
C-90

PR11111 25JA06J3 0012

Surface Delay Type:  
EZTL 30 17

DY17830 28NO05W1 0400

In-Hole Delay Type:  
MS 40 14

DA14641 28NO05W1 0143

**Accept** **Cancel**

WORKABOUTPRO

File Zoom Tools Help

Fill hole Pit: Pit #1

Summary Details Accessories

Hole Code: A Hole #: 1 Hole Dia: 12

Drill Depth: 20 Measured Depth: 19.5

Back Fill: 2 Stemming Depth: 3

Use Decks  Wet

Dens: 1.03 % Anfo: 80.0 % Emul: 15.0 % Other: 5.0

**Accept** **Cancel**

WORKABOUTPRO

File Zoom Tools Help

Fill hole Pit: Pit #1

Details Accessories Decks

Deck Height: 7

Deck #1) 3 ft **Add Deck**

Deck #2) 5 ft **Edit Deck**

**Change**

**Delete**

Primer: PR11111 25JA06J3 0012

Delay: DY17830 28NO05W1 0401

**Accept** **Cancel**

WORKABOUTPRO

File Zoom Tools Help

frmDeck

Primer Type:  
{All}

Primer Inventory  
PR11111 25JA06J3 0012

In Hole Delay Type:  
{All}

In Hole Delay  
DY17830 28NO05W1 0401

**Accept** **Cancel**

WORKABOUTPRO

File Zoom Tools Help

Fill Shot: s1

Primers In Hole Surface

Primer Type:  
C-90

PR11111 25JA06J3 0010

Qty: 25 **Add**

PR11111 25JA06J3 0011 x50  
PR11111 25JA06J3 0010 x25

**Delete**

**Accept** **Cancel**

WORKABOUTPRO

File Zoom Tools Help

Fill Shot: s1

Primers In Hole Surface

In Hole Delay Type:  
EZTL 30 25

DY25830 05DE05W1 0152

Qty: 35 **Add**

DY25830 05DE05W1 0152 x35

**Delete**

**Accept** **Cancel**

WORKABOUTPRO

File Zoom Tools Help

Fill Shot: s1

Primers In Hole Surface

Surface Delay Type:  
EZTL 30 25

DY25830 05DE05W1 0153

Qty: 40 **Add**

DY25830 05DE05W1 0153 x40

**Delete**

**Accept** **Cancel**

